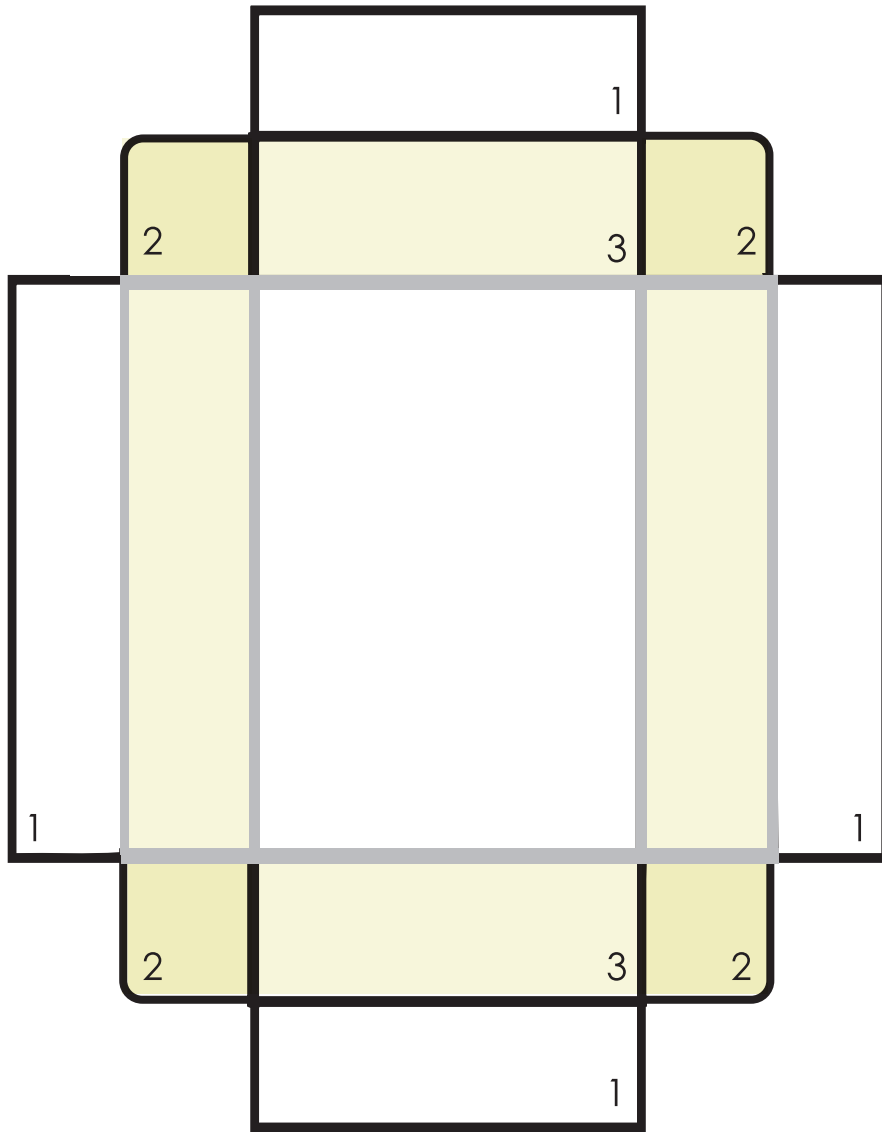
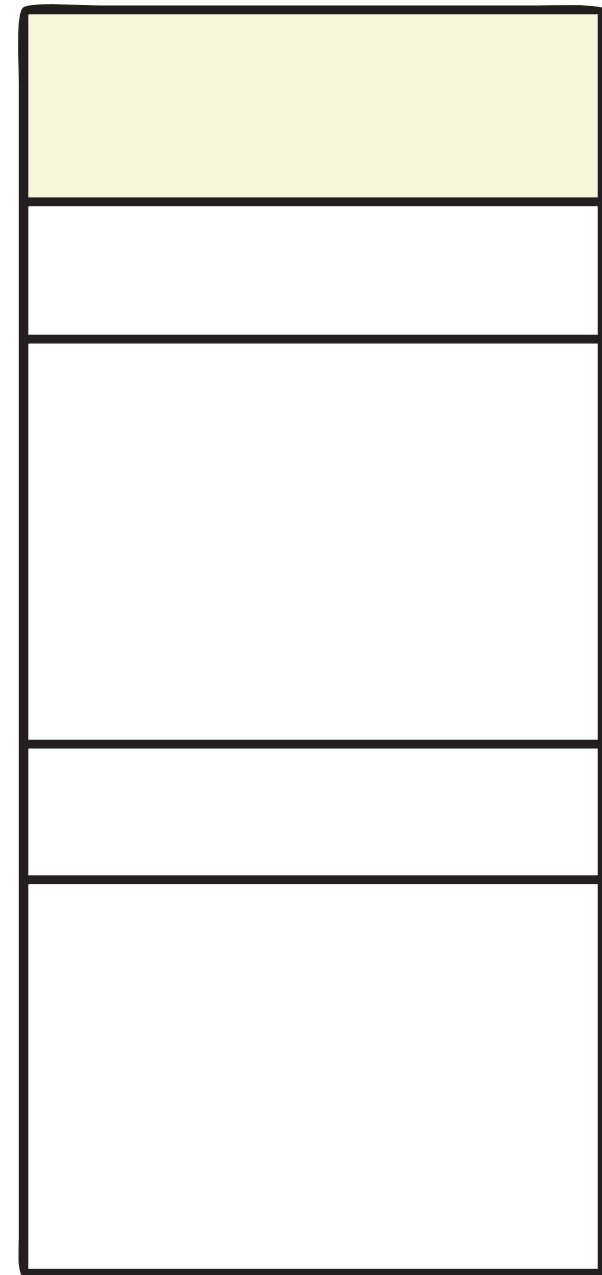


Valentine's Matchbox: 3" x .75"



inside



outside

- 1) Print out template. Cut out template on BLACK lines.
- 2) Score and fold on all GRAY lines.
- 3) GLUE the light yellow areas.
- 4) Fold the white sides (#1) over first. Tuck tabs (#2) into the folds (#3)
- 5) Fold and score all lines on the outside wrap, glue yellow area and glue flap into first section. Decorate outside with patterned paper.